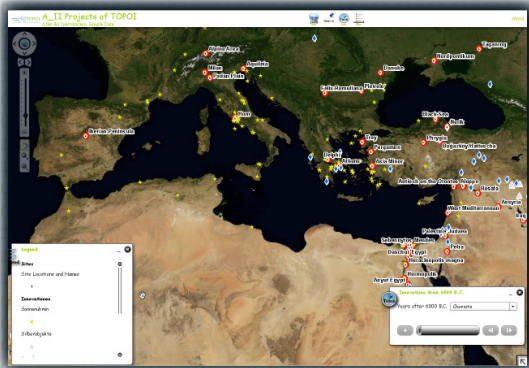


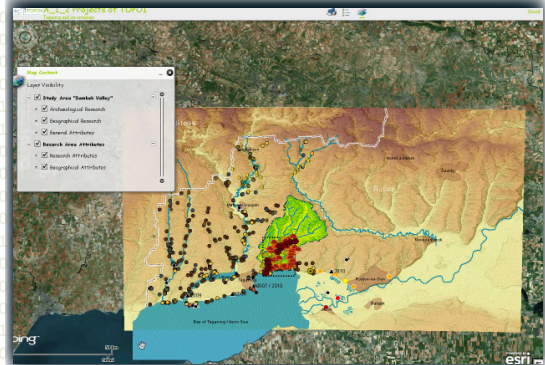
SPATIAL DATA

10. June 2015, 9 a.m. - 12 p.m. s.t.

Undine Lieberwirth **Topoi**



Introduction  
to the  
Topoi-WebGIS



**KONTAKT** undine.lieberwirth@topoi.org

**ORT** Topoihaus Dahlem GIS-Labor, Hittorfstraße 18, 14195 Berlin

please register until 8. June 2015 - detailed program on page 2



A WebGIS is a digital, interactive platform, which can represent GIS data browser-based. In addition, this web service offers the ability to perform spatial analyzes and to make the data available for download.

Participants will be able after the seminar to

- prepare and upload their GIS-data into the Topoi WebGIS,
- manage and adjust the WebGIS-layout according to their data structure.

**Requirements:** Participants should be familiar with GIS in general and with ArcGIS in particular. It is recommended to bring along your own GIS-data. An information sheet, how to prepare the data for an WebGIS upload, will be send to all registered participants in advance.

### Program

**Theoretical Part:** introduction to the Topoi-WebGIS its potential, functionalities and integration into the Topoi concept (Undine Lieberwirth)

**Practical Part:** introduction to the Web-Server and the Application Builder (Alexander Städtler, Undine Lieberwirth)