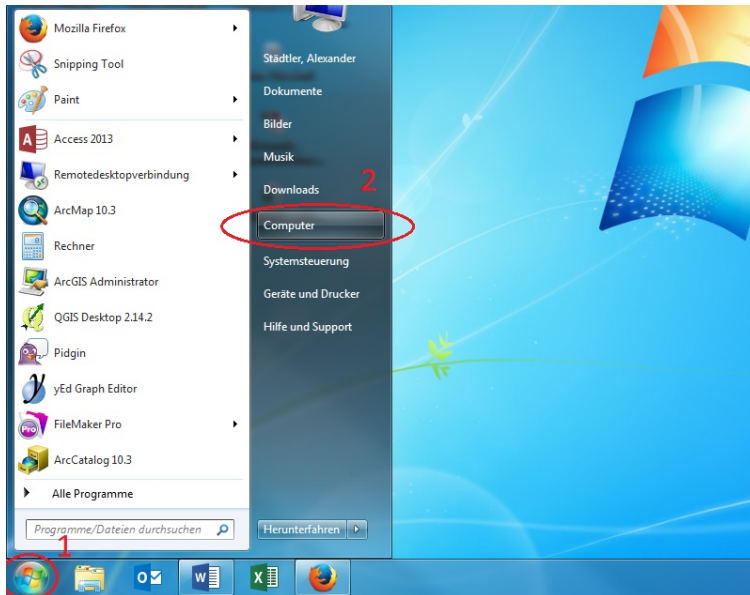


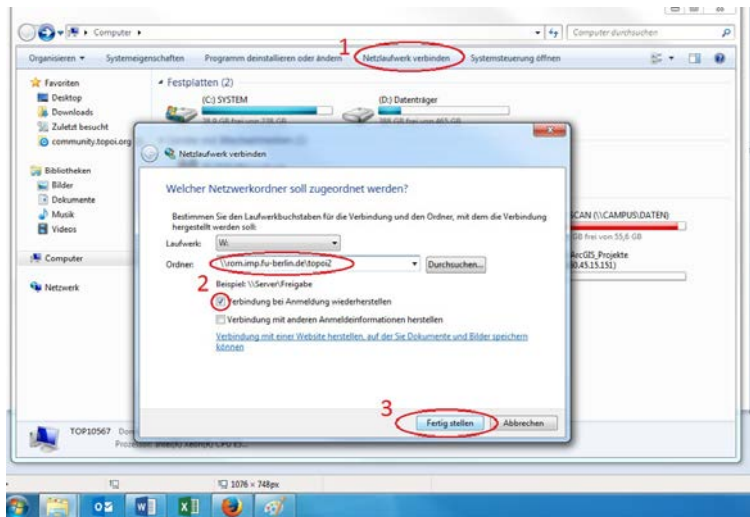
HOW TO connect to Topoi Fileserver

A. Connection via Windows 7 from inside the Free University Berlin

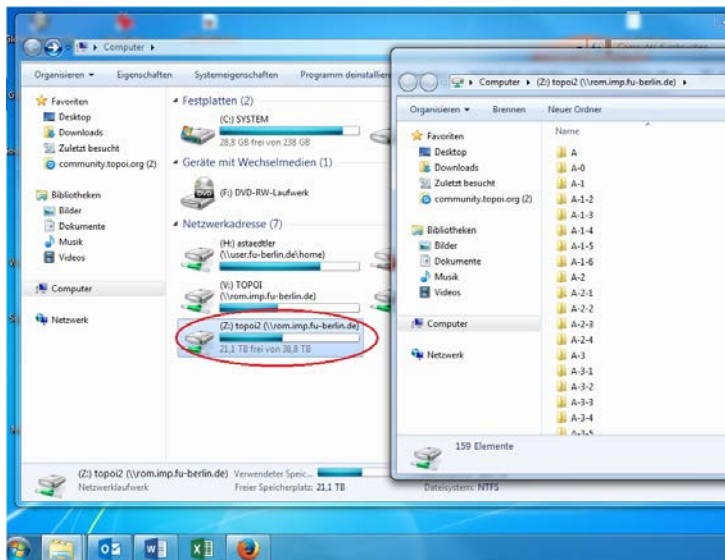
1. Open the Windows Explorer (figure 1).



2. Click "map network drive" choose an unoccupied letter and enter the following network address: (figure 2): [\\rom.imp.fu-berlin.de/topoi2](http://rom.imp.fu-berlin.de/topoi2) then click "ok".



3. Now you can open and see the new Topoi File structure (figure 3).



B. Connection via Windows 7 from outside the Free University Berlin

1. Establish a VPN connection to the University network using Cisco Anyconnect provided by ZEDAT. You find the instruction to install and configure the client at: <https://www.zedat.fu-berlin.de/VPNWindows>
2. After successfully establishing the VPN connection continue as described in chapter A

C. Connection via OS X from inside the Free University Berlin

1. Open the "Finder" (Abb. 4).
2. Navigate to "Go" -> "Connect to Server" and at "Server Adress" enter: smb: [//rom.imp.fu-berlin.de/topoi2](https://rom.imp.fu-berlin.de/topoi2) then click "Connect".
3. The TOPOI2 file structure automatically opens (Abb. 3).

D. Connection via OS X from outside the Free University Berlin

1. Establish a VPN connection to the University network using Cisco Anyconnect provided by ZEDAT. You find the instruction to install and configure the client at: <https://www.zedat.fu-berlin.de/VPNMac>.
2. After successfully establishing the VPN connection continue as described in chapter C.